

Session Name: New Session 9-14-2015 7-11 PM (1)

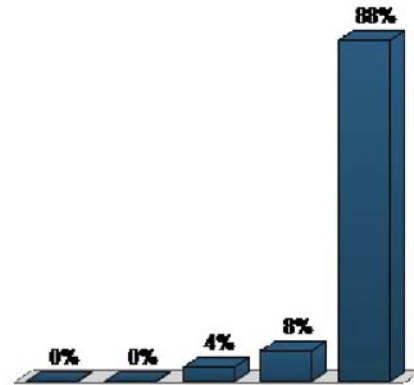
Date Created: 9/14/2015 5:49:17 PM **Active Participants:** 28 of 28

Average Score: 0.00% **Questions:** 8

Results by Question

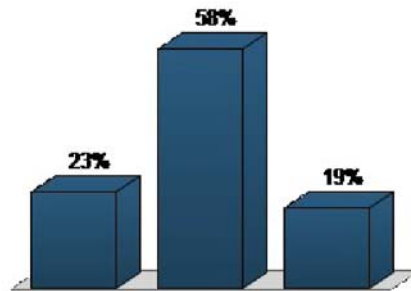
1. How long have you lived in the area? (Multiple Choice)

	Responses	
	Percent	Count
< 1 year	0%	0
1-2 years	0%	0
3-6 years	3.85%	1
7-10 years	7.69%	2
>10 years	88.46%	23
Totals	100%	26



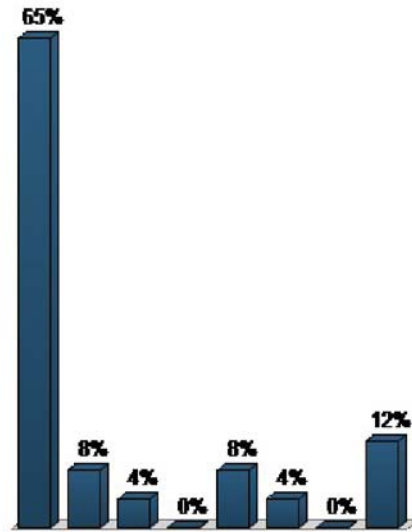
2. If you have a question or concern about either Stones Ranch or Camp Niantic, do you know who to call? (Multiple Choice)

	Responses	
	Percent	Count
Yes	23.08%	6
No	57.69%	15
I have never needed to call	19.23%	5
Totals	100%	26



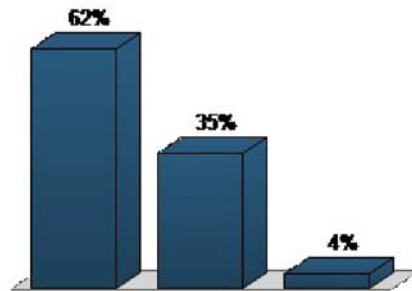
**3. Which land use type is the biggest concern relative to incompatibility with military?
(Multiple Choice)**

Responses		
	Percent	Count
Residential	65.38%	17
Commercial	7.69%	2
Industrial	3.85%	1
Agriculture	0%	0
Habitat Areas	7.69%	2
Other	3.85%	1
None of the Above	0%	0
All of Above	11.54%	3
Totals	100%	26



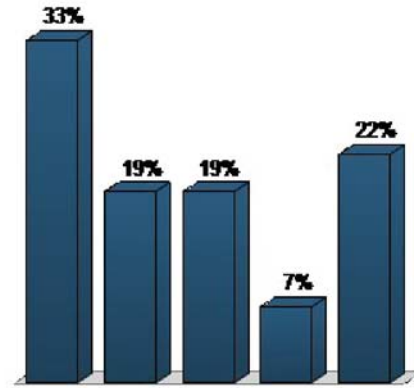
4. Do you feel it is necessary for local government to ensure citizens are protected from the potential of aircraft mishaps? (Multiple Choice)

Responses		
	Percent	Count
Yes	61.54%	16
No	34.62%	9
I don't know	3.85%	1
Totals	100%	26



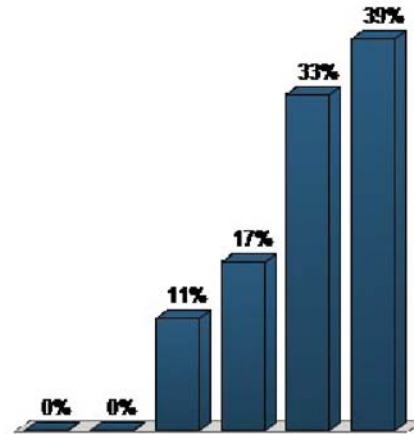
5. Is noise from Stones Ranch an issue? (Multiple Choice)

Responses		
	Percent	Count
Yes	33.33%	9
Rarely	18.52%	5
No	18.52%	5
Not now, but could be in the future	7.41%	2
I don't know	22.22%	6
Totals	100%	27



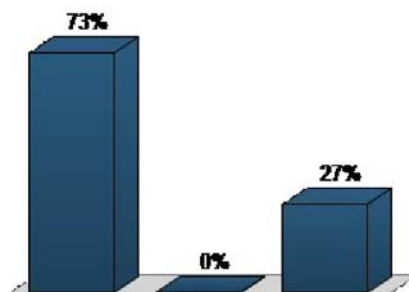
6. If "Yes" or "Rarely", at what times/days do you experience this? (Multiple Choice)

Responses		
	Percent	Count
Weekday (daytime)	0%	0
Weekday (night)	0%	0
Weekend (daytime)	11.11%	2
Weekend (night)	16.67%	3
Varies	33.33%	6
N/A	38.89%	7
Totals	100%	18



7. Do you think natural resource management impacts the missions at either facility? (Multiple Choice)

Responses		
	Percent	Count
Yes	73.08%	19
No	0%	0
I don't know	26.92%	7
Totals	100%	26



8. Do you feel the military's use of the transportation system puts undo impacts on community? (Multiple Choice)

Responses		
	Percent	Count
Yes	11.54%	3
Somewhat	15.38%	4
No	69.23%	18
Commercial use impacts the military	3.85%	1
I don't know	0%	0
Totals	100%	26

